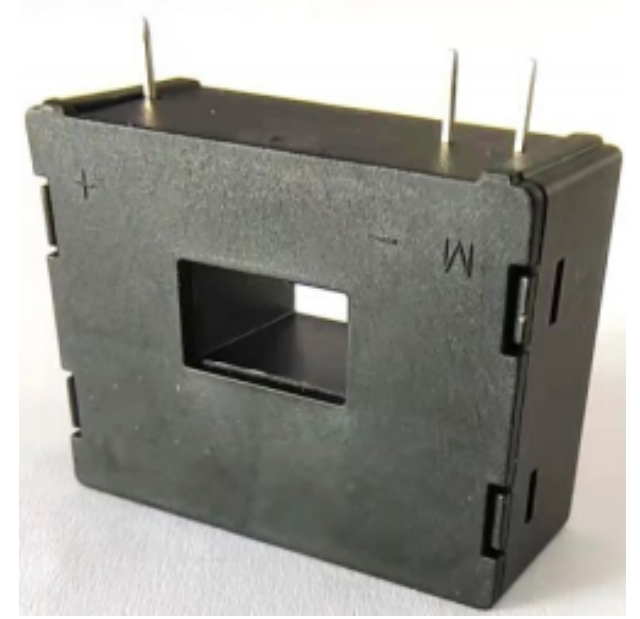


# Closed-Loop Hall Current Sensor

## YCCC25..150AP



It can be used to measure DC, AC, and pulse current. The primary and secondary circuits are fully insulated. There is no insertion loss.

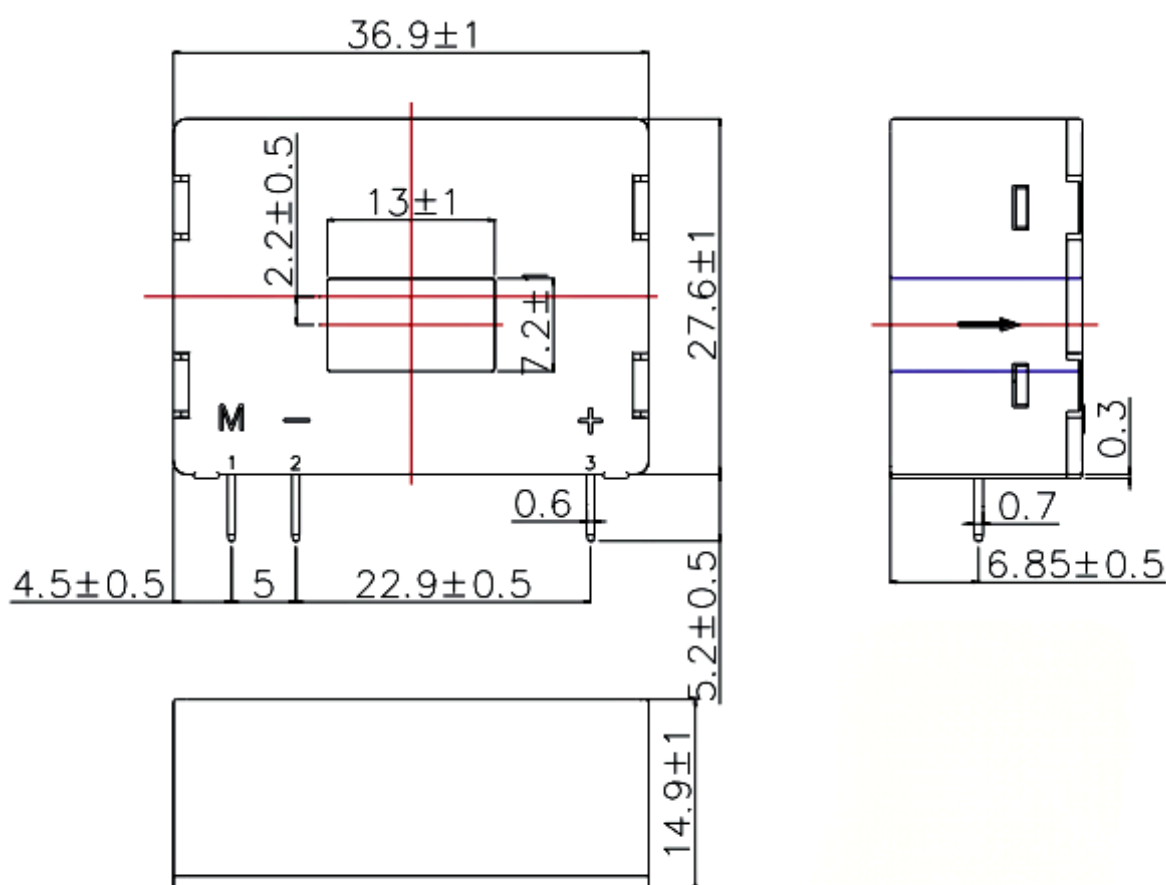
Product Model				
YCC25AP	25	± 55	25	1: 1000
YCC50AP	50	± 75	50	1: 1000
YCC100AP	100	± 150	50	1: 2000
YCC125AP	125	± 200	125	1: 1000
YCC130AP	130	± 200	130	1: 1000
YCC150AP	150	± 200	75	1: 2000

Application Areas
Switching power supplies
AC drives
Uninterruptible power supplies
Static converters in DC motors

### Executive Standards

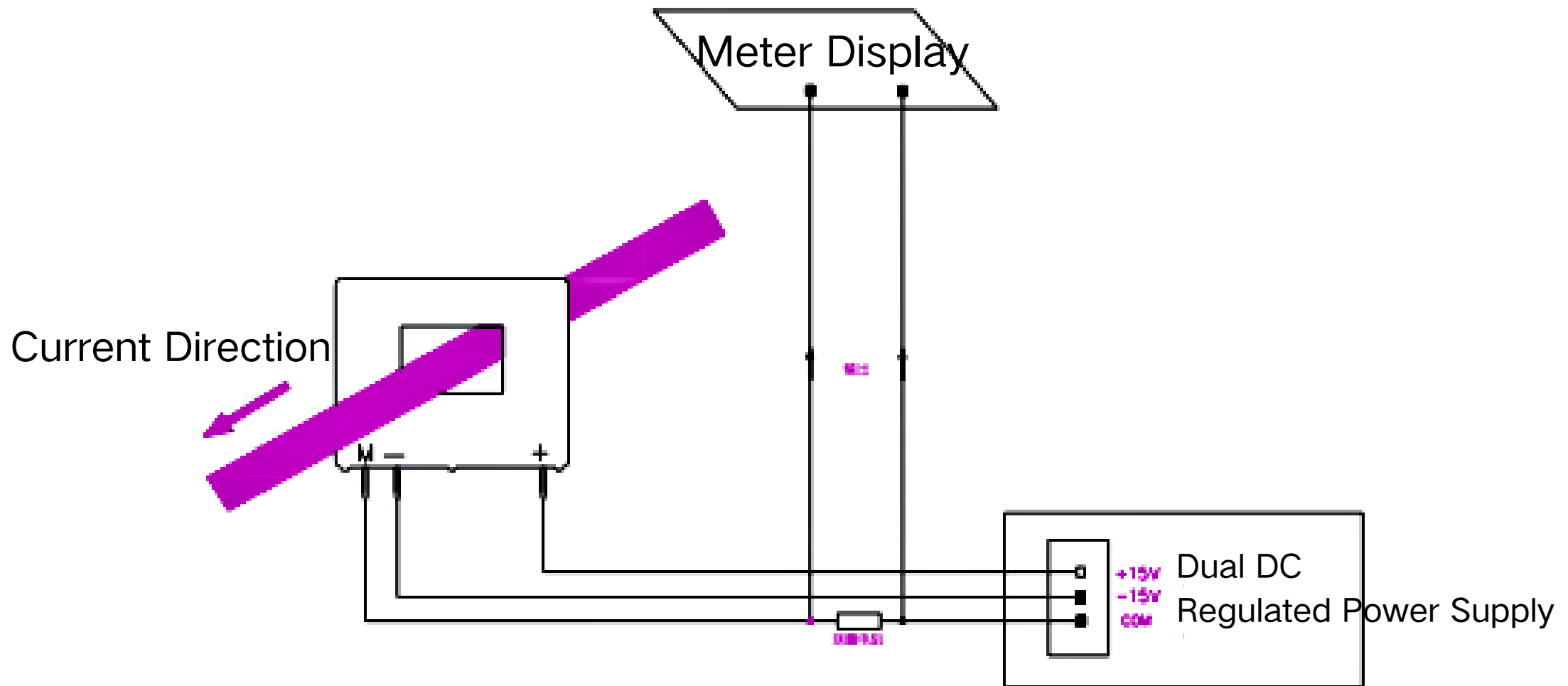
- JB/T 7490-2007 Hall Effect Current Sensors
- SJ20790-2000 General Specification for Current and Voltage Sensors

### Outline Dimensions and Pin Definition (Unit: mm)



Pin	Definition
1	M
2	-
3	+

- General Tolerance: ± 1 mm
- Other Tolerances Standard: GB/T 1804-2000-M



### Usage Instructions and Precautions

- Refer to the current direction arrow in the structural diagram to connect the current correctly, and pay attention to the forward and reverse directions of the current passing through the sensor.
- Strictly follow the functional pin definitions marked in the structural diagram for wiring (Note: Incorrect wiring may cause damage to the sensor).
- The above specifications are for standard parameter products; products can be customized according to customer requirements.

### Electrical Parameter Characteristics @ Ta = 25°C

Product Model	Rated Current IPN(A)	Measurement Range IPM(A)	Rated Output IOUT(mA)	Turns Ratio KN
YCC25AP	25	± 55	25	1 : 1000
YCC50AP	50	± 75	50	1 : 1000
YCC100AP	100	± 150	50	1 : 2000
YCC125AP	125	± 200	125	1 : 1000
YCC130AP	130	± 200	130	1 : 1000
YCC150AP	150	± 200	75	1 : 2000